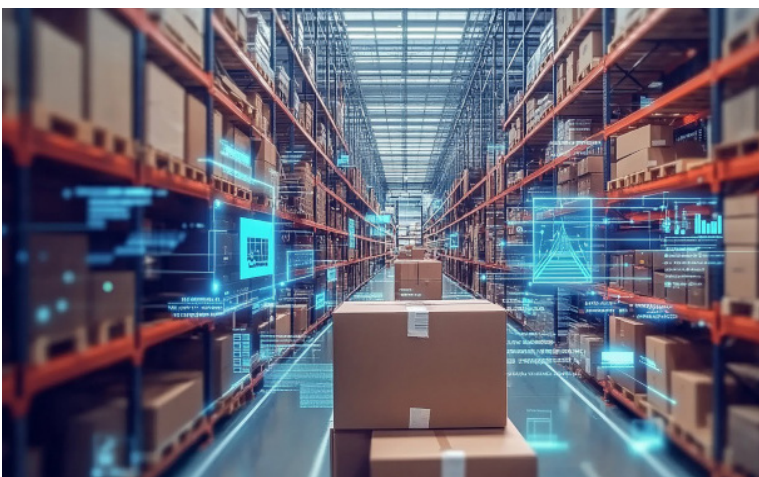


Smart Ports & Logistics

Modern ports and logistics hubs depend on real-time data for managing container movement, autonomous vehicles, and operational safety. 5G at the edge enables ultra-low-latency communications and localized data processing to optimize throughput, reduce errors, and enhance security.

Key Benefits

- > **Streamlined Operations:** Real-time container tracking, gate automation, and traffic management improve port efficiency.
- > **Support for Autonomous Systems:** Enables safe navigation and coordination of automated cranes, forklifts, and trucks.
- > **Predictive Maintenance:** Data from edge-connected IoT sensors is analyzed in real time to prevent equipment failures.
- > **Reduced Downtime and Congestion:** Faster decision-making and automated workflows reduce bottlenecks in cargo movement.
- > **Improved Worker Safety:** Sensor-driven alerts warn workers of dangerous conditions or equipment malfunctions.
- > **Enhanced Environmental Monitoring:** Real-time emissions and weather data improve compliance and safety.



Intro to Edge Computing

In today's fast-evolving landscape, the need for real-time data processing and actionable insights at the edge has become a critical priority for mission-critical operations. Odin's Edge, powered by Norseman Defense Technologies, is designed to address these demands by delivering scalable, high-performance computing solutions in ruggedized, portable environments. This solution brings unparalleled flexibility, enabling data-driven decisions at the tactical edge while ensuring robust security and seamless scalability.

Core Capabilities:

- > **High-Bandwidth IoT Connectivity:** Supports massive device density across expansive port operations.
- > **Edge Analytics and AI:** Reduces cloud dependence by enabling localized decision-making from sensor data.
- > **Scalable Network Infrastructure:** Easily adds new sensors, equipment, and vehicles without disrupting operations.
- > **Private 5G Network Zones:** Segments sensitive logistics data for additional security and traffic prioritization.
- > **Digital Twin Integration:** Supports real-time simulation of operations to improve planning and execution.
- > **Robust Cybersecurity Features:** Protects against data breaches and unauthorized access to logistics systems.