



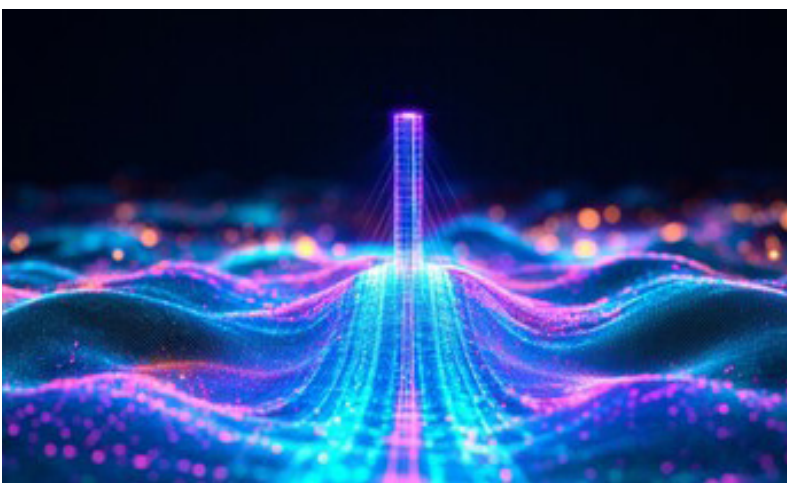
Resilient IT with Edge Delivered Virtual Desktops

With CDI at the edge, organizations can rapidly deploy virtual desktop environments from hardened edge devices. These systems come pre-loaded with containerized desktop images that can be activated instantly in the field, providing end-users with full access to applications, data, and tools.

Benefits

This system ensures continuity of operations even when central networks are compromised or unable to be accessed in remote locations.

- > **Instant Recovery:** No reliance on cloud or centralized infrastructure.
- > **Consistent User Environments:** Identical experience across all locations.
- > **Crisis-Ready Architecture:** Built for emergencies across sectors.
- > **Strategic Prepositioning:** Systems can be deployed in advance for rapid response.
- > **Multi-Site Synchronization:** Ensures seamless transitions across affected regions.



Intro to Edge Computing

In today's fast-evolving landscape, the need for real-time data processing and actionable insights at the edge has become a critical priority for mission-critical operations. Odin's Edge, powered by Norseman Defense Technologies, is designed to address these demands by delivering scalable, high-performance computing solutions in ruggedized, portable environments. This solution brings unparalleled flexibility, enabling data-driven decisions at the tactical edge while ensuring robust security and seamless scalability.

Core Capabilities:

- > **Pre-Staged Recovery Images:** Desktop containers ready for field activation.
- > **Offline Boot Capability:** No internet needed for launch or operation.
- > **Unified Device and App Management:** Quickly brings users back online.
- > **Field-Hardened Infrastructure:** Built to operate in emergency conditions.
- > **Scalable Across Response Teams:** Rapidly supports surge operations across agencies.