



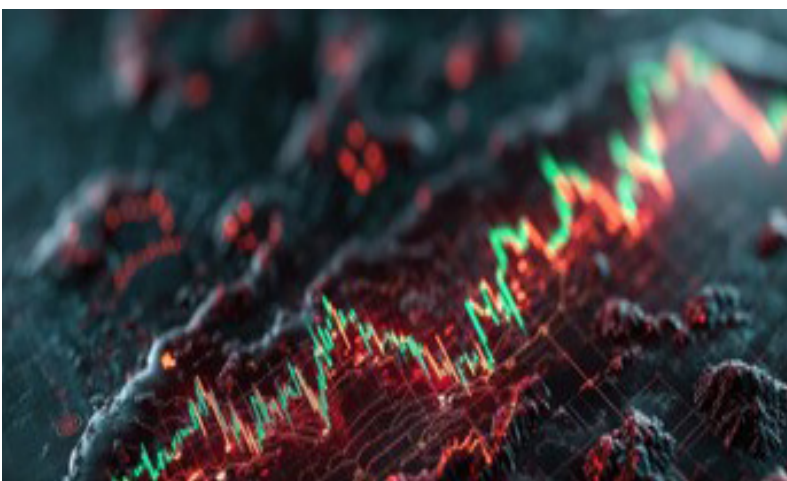
Real-Time Tactical Decision Support

Process data at the tactical edge to support fast, informed decisions in active operations. Edge AI enhances warfighter agility by reducing reliance on satellite or cloud systems and enabling commanders to act on real-time battlefield insights.

Key Capabilities:

A forward-deployed unit processes drone feeds, blue-force tracking, and environmental sensors locally. Flag threats, re-route convoys, and help rapid targeting decisions without cloud latency or external dependencies

- > **Faster OODA Loop** – Supports Observe, Orient, Decide, Act cycle within seconds.
- > **Survivability in Disconnected Environments** – Maintains functionality without external comms.
- > **Improved Operational Accuracy** – Reduces ambiguity in threat recognition and terrain analysis.
- > **Higher Tempo Operations** – Supports faster, coordinated maneuvers in high-risk areas.
- > **Data Security in the Field** – Keeps sensitive intel at the edge, minimizing backhaul risks.



Intro to Edge Computing

In today's fast-evolving landscape, the need for real-time data processing and actionable insights at the edge has become a critical priority for mission-critical operations. Odin's Edge, powered by Norseman Defense Technologies, is designed to address these demands by delivering scalable, high-performance computing solutions in ruggedized, portable environments. This solution brings unparalleled flexibility, enabling data-driven decisions at the tactical edge while ensuring robust security and seamless scalability.

Core Capabilities:

- > **Edge-Centric Data Aggregation** – Ingests and synchronizes data from ISR, SIGINT, and field sensors.
- > **Real-Time Visualization Dashboards** – Enables local ops teams to see the battlespace dynamically.
- > **Onboard AI Analytics** – Conducts detection, classification, and route optimization with minimal latency.
- > **Mission-Centric Workflows** – Tailored interfaces and tools for specific unit roles and command levels.
- > **Ruggedized & Mobile Systems** – Certified for MIL-STD operation in extreme environments.